



Windows
Doors
Skylight
Hatch
Stairs

Expedition Vehicles
Technology
2024

01



Opening an Airing

The hinge mechanism integrated in the frame allows stepless adjustment of the opening position. This allows the window to be opened in any position.

Cleaning

Thanks to the opening system used for our windows, it is easy to clean the window surfaces.



02

03



Glazing

Windows are double-glazed with tempered safety glass. The glass is covered with a special thermal coating and the space between the panel is filled with the noble gas Argon. Also available with new glazing to reduce infrared radiation.

Roller Blind and Insect Screen

Roller blind designed as a self-supporting frame. The insect screen reliably prevents insects from entering and the blackout applied effectively shades the interior.



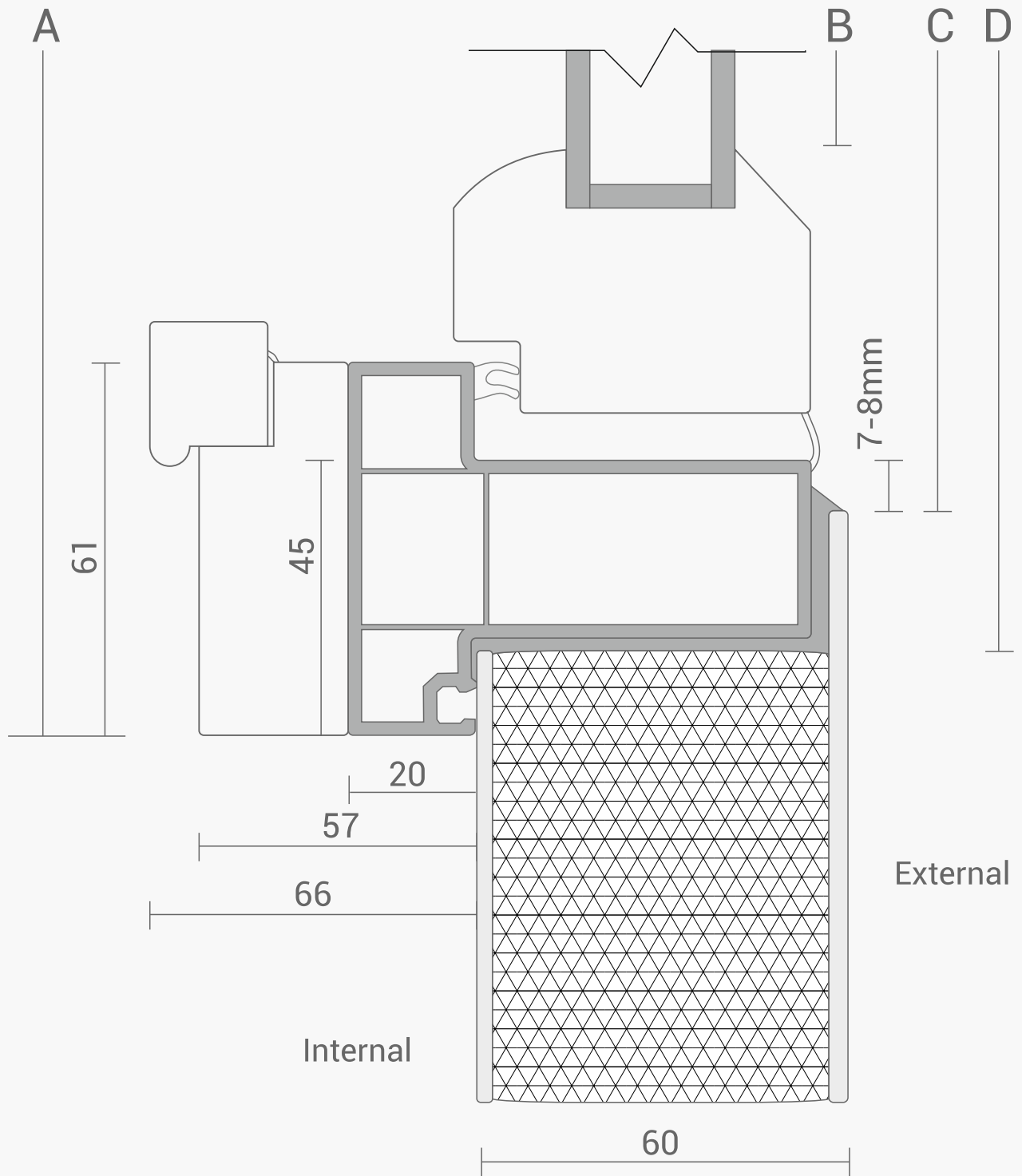
04

Key Features:

Tempered glass windows from "Optimal" have been designed for use in expedition vehicles and campers. They ensure comfort even in extreme conditions.

- Top quality and elegant finish thanks to the use of cnc technology
- The window after installation is flush with the external wall which prevents it from being caught by external elements such as branches for example.
- "Optimal" windows guarantee excellent thermal and acoustic insulation, as the space between the panes is filled with argon gas. Also available with new glazing with an internal low-e coating that reduces infrared light and UV radiation to a minimum. Double sealing also prevents condensation.
- Strength tests carried out in a pressure chamber give us confidence that "Optimal" windows meet all the requirements for this type of window. This has been confirmed by our experience and verified by our customers. "The sky is the limit"
- For many years of trouble-free use and for protection against burglary, window frames and sashes are equipped with specially designed integrated steel frames. All window hardware has been attached to the steel frames.
- All reinforcements and fittings are made of materials such as stainless steel, galvanised steel and aluminium giving the best protection against weather conditions
- The window and the roller shutter can be conveniently operated with one hand and the unique design ensures stepless adjustment.
- The outer frame can be painted in any colour.

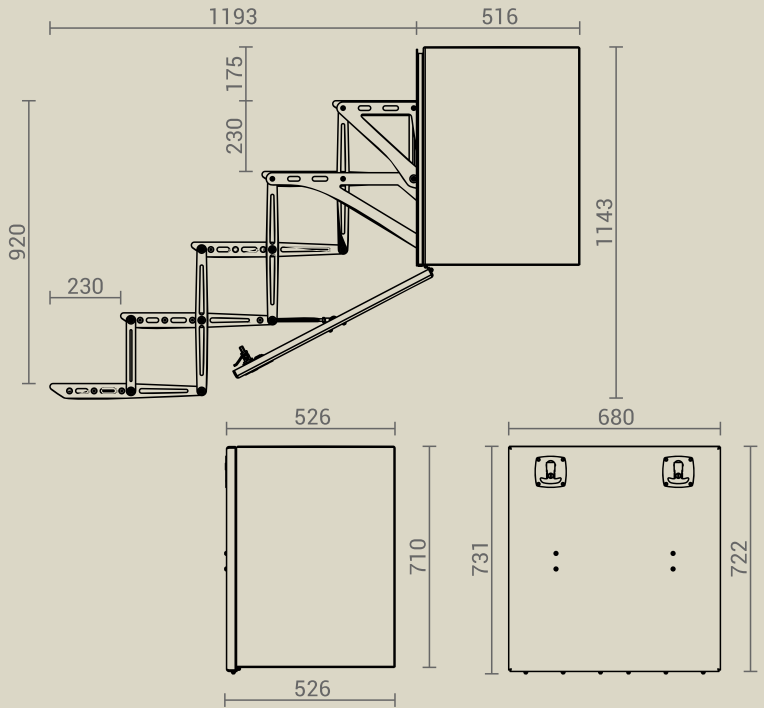




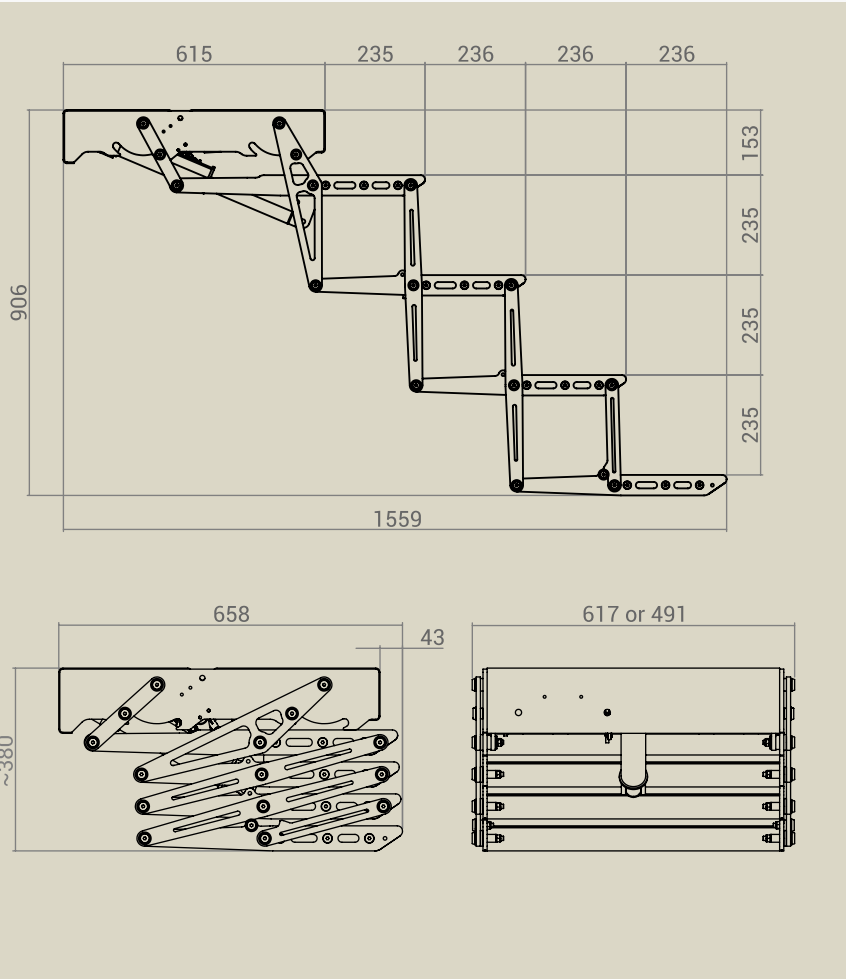
Technical Data and Dimensions

A Overall	B Viewable	C Outer Laminate	D Inner Laminate
500x400	280x180	424x324	472x372
800x400	580x180	724x324	772x372
600x440	380x220	524x364	572x412
400x500	180x280	324x424	372x472
600x500	380x280	524x424	572x472
820x500	600x280	744x424	792x472
940x500	720x280	864x424	912x472
940x550	720x330	864x474	912x522
440x600	220x380	364x524	412x572
500x600	280x380	424x524	472x572
800x600	580x380	724x524	772x572
1000x600	780x380	924x524	972x572
1200x600	980x380	1124x524	1172x572
1400x600	1180x380	1324x524	1372x572

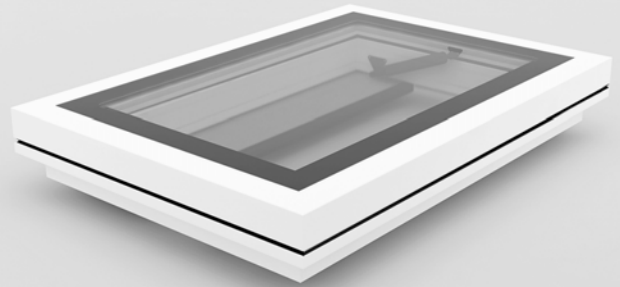
Stairs



The moving elements of the stairs are made of high-quality stainless steel, while the box is made of 3 mm thick aluminum sheet. Available in manual and electric version with a complete control system.



Skylight



Exterior:
Small hatch: 574 x 574mm
Large hatch: 1034 x 729mm

Roof cut-out:
Small hatch: 500 x 500mm
Large hatch: 655 x 960mm

Opening Angle:
Small hatch: 40°
Large hatch: 86°

Access:
Small hatch: 340 x 340mm
Large hatch: 780 x 480mm

Height above roof:
90 mm

Application inside for "60 mm ceiling":
2 mm

Minimum ceiling thickness:
43 mm

Locking System

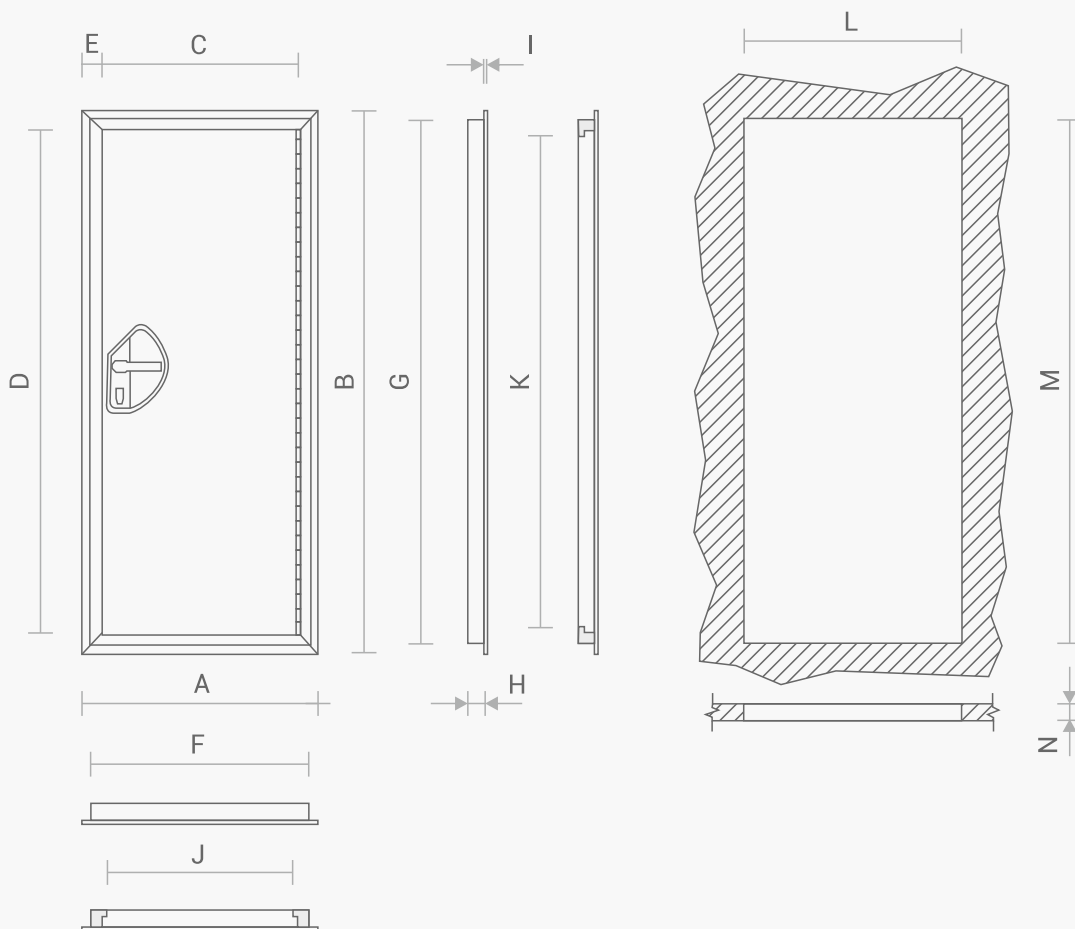


Our door locking systems for expedition trucks provide a reliable and secure solution for travelers. With advanced technology and sturdy construction, our door locking systems ensure protection against unauthorized access and the integrity of the cargo space even in challenging terrain conditions.

Dimensions: 300, 600, 900, 1600 mm



Doors

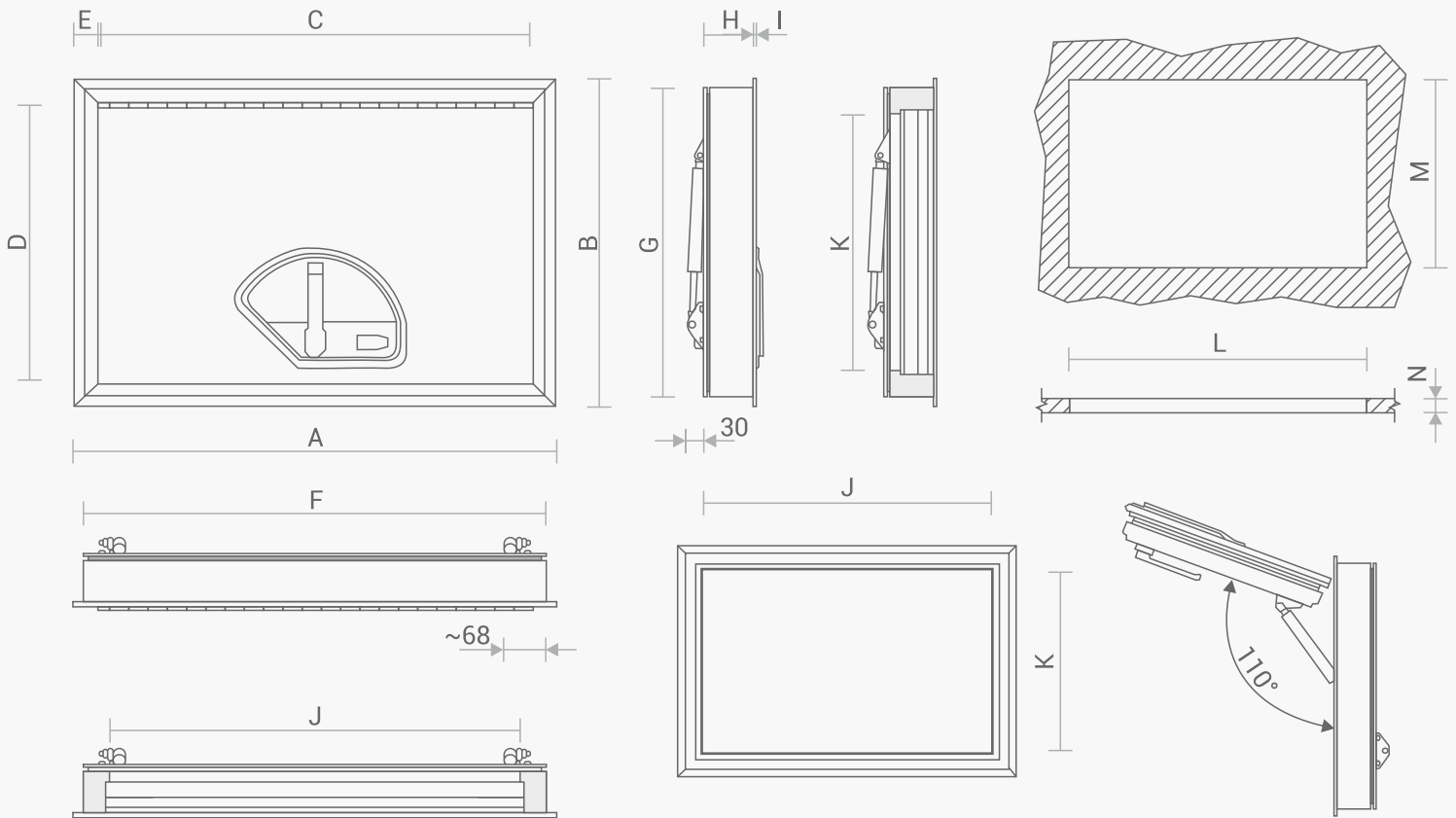


Model	Overall dimensions		Leaf dimensions		Frame dimensions			Thickness		Opening dimensions		Cutout dimensions			Lock type
	A	B	C	D	E	F	G	H	I	J	K	L	M	N	
737x1814	737	1814	653	1730	37	706	1783	78	3,8	622	1699	711	1788	50-78	Three-point lock
737x1980	737	1980	653	1896	37	706	1949	78	3,8	622	1865	711	1954	50-78	Three-point lock

Left and right versions available



Hatch

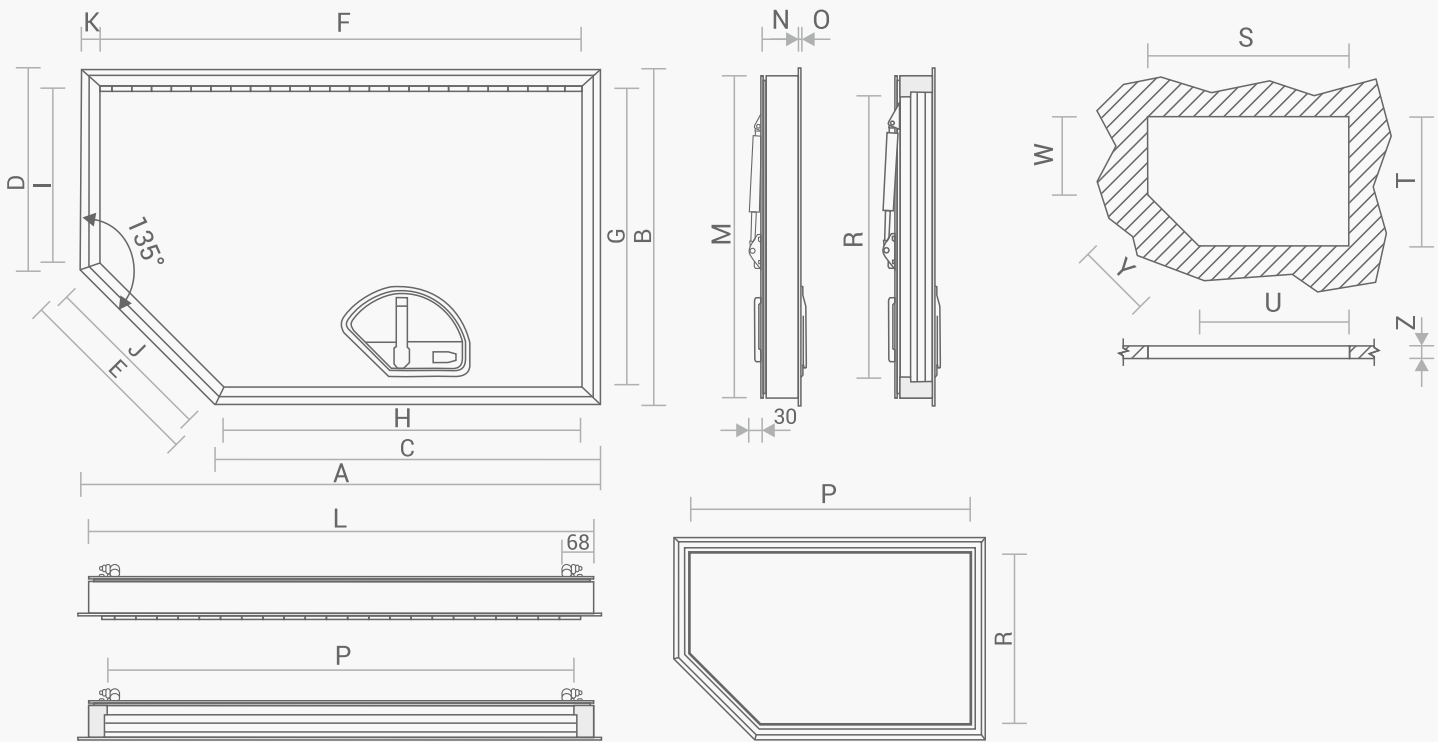


Model	Overall dimensions		Leaf dimensions		Frame dimensions			Thickness		Opening dimensions		Cutout dimensions			Lock type
	A	B	C	D	E	F	G	H	I	J	K	L	M	N	
444x444	444	444	360	360	37	413	413	78	3,8	329	329	418	418	50-78	Single-point lock
444x570	444	570	360	486	37	413	539	78	3,8	329	455	418	544	50-78	Single-point lock
570x444	570	444	486	360	37	539	413	78	3,8	455	329	544	418	50-78	Single-point lock
570x766	570	766	486	682	37	539	735	78	3,8	455	651	544	740	50-78	Single-point lock
617x717	617	717	533	633	37	586	686	78	3,8	502	602	591	691	50-78	Single-point lock
717x617	717	617	633	533	37	686	586	78	3,8	602	502	691	591	50-78	Three-point lock
717x902	717	902	633	818	37	686	871	78	3,8	602	787	691	876	50-78	Three-point lock
717x1104	717	1104	633	1020	37	686	1073	78	3,8	602	989	691	1078	50-78	Three-point lock
766x570	766	570	682	486	37	735	539	78	3,8	651	455	740	544	50-78	Three-point lock
902x717	902	717	818	633	37	871	686	78	3,8	787	602	876	691	50-78	Three-point lock
1104x509	1104	509	1020	425	37	1073	478	78	3,8	989	394	1078	483	50-78	Three-point lock
1104x717	1104	717	1020	633	37	1073	686	78	3,8	989	602	1078	691	50-78	Three-point lock
1104x1276	1104	1276	1020	1192	37	1073	1245	78	3,8	989	1161	1078	1250	50-78	Three-point lock
1276x1104	1276	1104	1192	1020	37	1245	1073	78	3,8	1161	989	1250	1078	50-78	Three-point lock
1814x737	1814	737	1730	653	37	1783	706	78	3,8	1699	622	1788	711	50-78	Three-point lock
1980x737	1980	737	1896	653	37	1949	706	78	3,8	1865	622	1954	711	50-78	Three-point lock

Left and right versions available



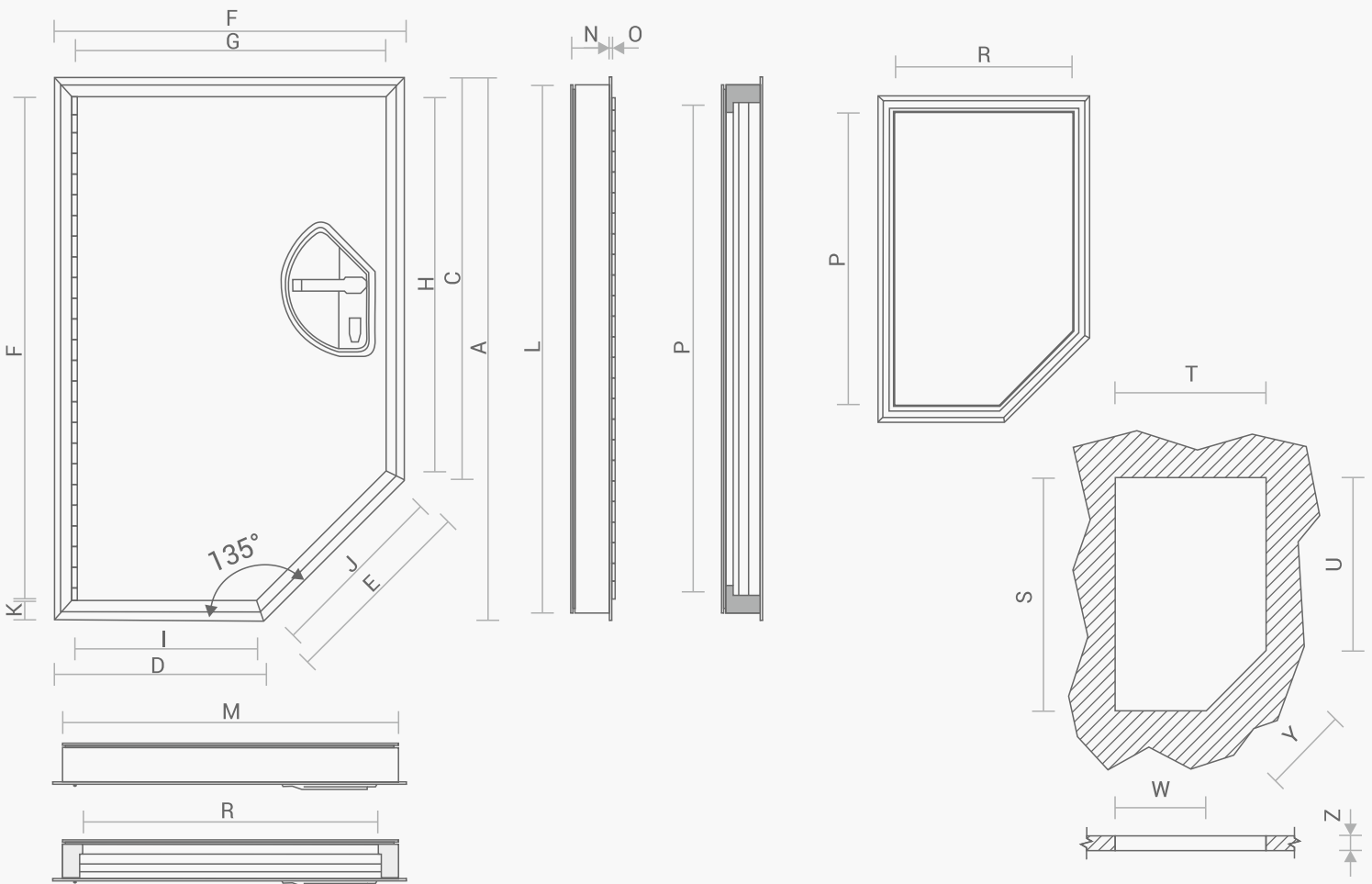
Horizontal Hatch with Bevel



Model	Overall dimensions					Leaf dimensions					Frame dimensions			Thickness		Opening dimensions		Cutout dimensions						
	A	B	C	D	E	F	G	H	I	J	K	L	M	H	I	P	R	S	T	U	W	Y	Z	
1104x717	1104	717	819	430	403	1020	633	760	372	368	37	1073	684	78	3,8	989	602	1078	691	800	413	392	50-78	

Left and right versions available, Three-point Lock

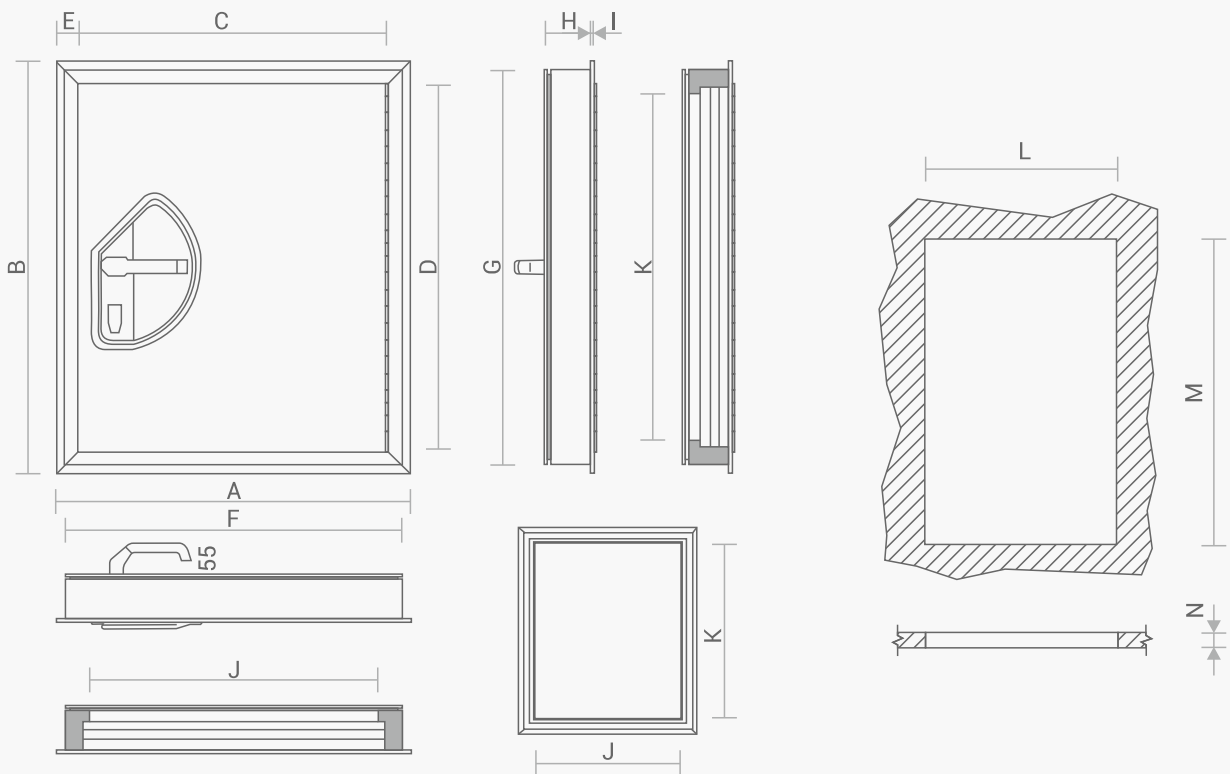
Vertical Hatch with Bevel



Model	Overall dimensions					Leaf dimensions					Frame dimensions			Thickness		Opening dimensions		Cutout dimensions					
	A	B	C	D	E	F	G	H	I	J	K	L	M	H	I	P	R	S	T	U	W	Y	Z
717x1104	1104	717	819	430	403	1020	633	760	372	368	37	1073	684	78	3,8	989	602	1078	691	800	413	392	50-78

Left and right versions available, Three-point Lock

Passthrough To The Cabin



Model	Overall dimensions		Leaf dimensions		Frame dimensions			Thickness		Opening dimensions		Cutout dimensions			Lock type
	A	B	C	D	E	F	G	H	I	J	K	L	M	N	
617x717	617	717	533	633	37	586	686	78	3,8	502	602	591	691	50-78	Three-point lock
717x902	717	902	633	818	37	686	871	78	3,8	602	787	691	876	50-78	Three-point lock
717x1104	717	1104	633	1020	37	686	1073	78	3,8	602	989	691	1078	50-78	Three-point lock
717x1276	717	1276	633	1192	37	686	1245	78	3,8	602	1161	691	1250	50-78	Three-point lock

Left and right versions available



OPTIMAL RADOSŁAW PRYBA

Kolejowa 15, 67-300 Szprotawa, Poland

info@optimal-expedition.com

www.optimal-expedition.com



+48 696 280 099

+48 505 054 380